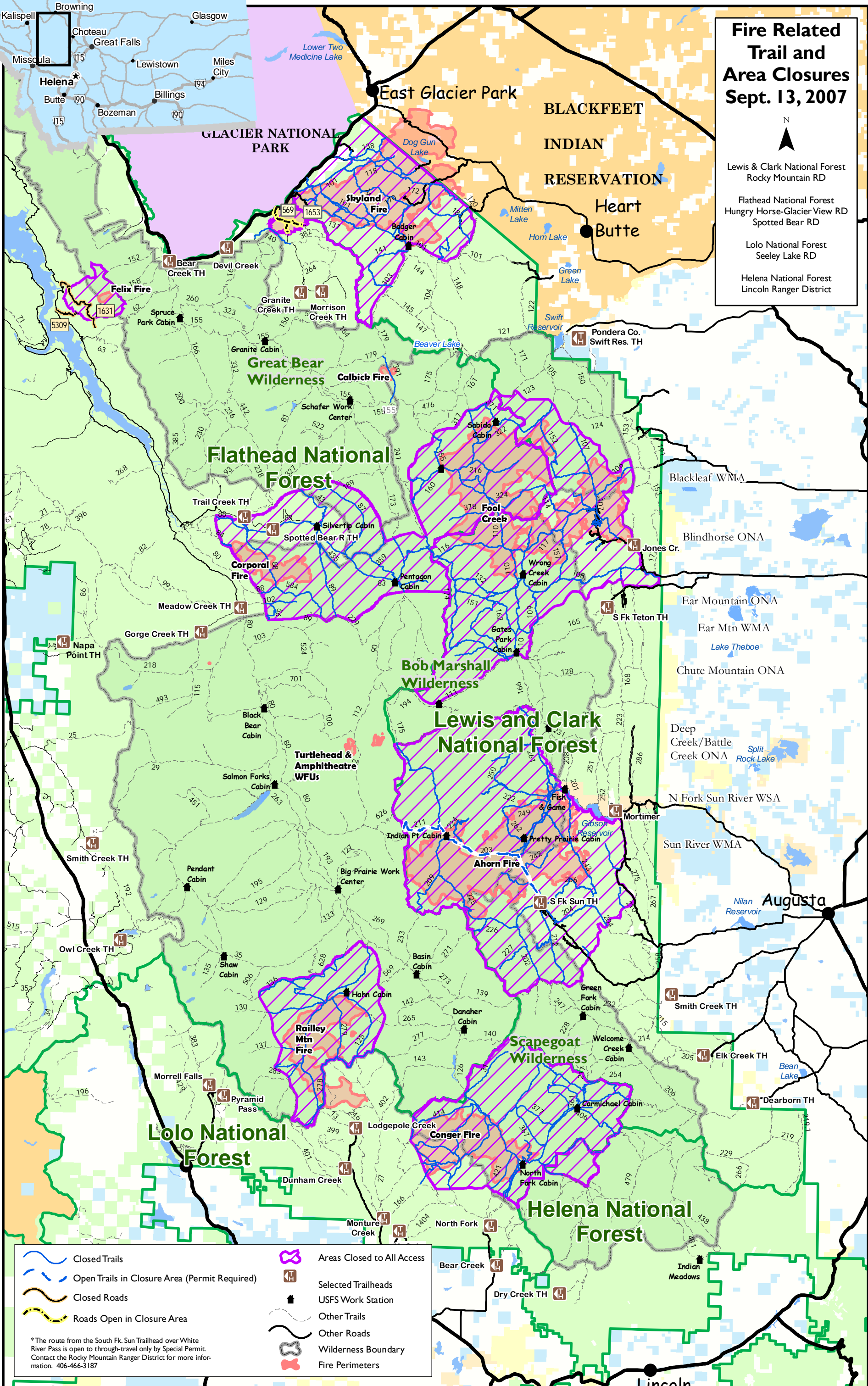


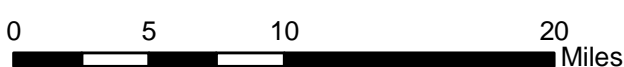
Fire Related Trail and Area Closures Sept. 13, 2007



- Lewis & Clark National Forest
Rocky Mountain RD
- Flathead National Forest
Hungry Horse-Glacier View RD
Spotted Bear RD
- Lolo National Forest
Seeley Lake RD
- Helena National Forest
Lincoln Ranger District



	Closed Trails		Areas Closed to All Access
	Open Trails in Closure Area (Permit Required)		Selected Trailheads
	Closed Roads		USFS Work Station
	Roads Open in Closure Area		Other Trails
<p>*The route from the South Fk. Sun Trailhead over White River Pass is open to through-travel only by Special Permit. Contact the Rocky Mountain Ranger District for more information. 406-466-3187</p>			Other Roads
			Wilderness Boundary
			Fire Perimeters



Fire perimeters may not reflect the most current data. This map is designed to reflect closure information and may not be updated just due to fire perimeter changes.