



# EAST SLOPE BACK COUNTRY HORSEMEN

FOUNDED 1978 37 YEARS OF TRAIL TAILS September 2015

## OFFICERS

**President:**

Bob Hermance

**Vice President:**

Joe Suta

**Secretary:**

Helen Suta

**Treasurer:**

LeAnn Hermance

**State Directors:**

Fred Fitzpatrick

Ron Ries

**Alt. State Director:**

Merlyn Huso

**Chapter Directors:**

Bill Poser

Clete Gregory

Lisa Schmidt

Dick Kinyon

Steve Hutton

Debbie Ries

**Jr. Director:**

None

**Editor:** Le Ann Hermance

Hermance@3rivers.net

**Webmaster:** Fred Fitzpatrick

richfitz@3rivers.net

**BCH of Montana:**

**Chairman:** Connie Long

Missoula Chapter

**ESBCH-Web Site:**

www.bchmt.org/esbch/  
default.html

**Montana BCH Web Site**

www.bchmt.org

Greetings To All

LeAnn and I would personally like to thank everyone who helped with the trail work around Swift Dam, the Poker Ride and getting the new hitch rails installed at the Beartooth. August was a very busy month but as a team we did great work.

We are getting down to the wire on getting the raffle items for the state convention. Fred has put together a brochure and vendor letters. Thank you Fred for keeping us on track. At the upcoming meeting we will go over what has been accomplished and what needs to be done before the December state board meeting. Remember that the meeting will be at the Hermance's at 26 Pendroy Rd., Conrad, 7:00 PM, Thursday September 10<sup>th</sup>.

We have all been aware of the fires that have been burning from Benchmark to Heart Butte. From the reports there have been no structures lost but a tremendous amount of timber has been burned. For those who use the Swift Dam Trailhead, it is just sad at what it looks like now. Pictures of Hayward Creek are in the news letter. The fires might be a topic we would like the Forest Service to discuss at the state convention. The August Lange Creek weed project was postponed and this probably was a good thing due to the amount of fire activity in the area. One of the concerns was the firefighting equipment coming into our area from other locations and the potential of spreading noxious weeds and aquatic invasive species. For updates to the fire activity you can go to the Inciweb site at: [inciweb.nwccg.gov/incident/4572/](http://inciweb.nwccg.gov/incident/4572/) The name for this fire complex is the Rocky Mountain Ranger District or RMRD Fires.

See you on Thursday, *Bob*

Next meeting—Thursday  
September 10, 7:00 PM,  
Hermance's . 26 Pendroy Rd,  
Conrad.



## SEPTEMBER BIRTHDAYS

Joshua Snow

### AUGUST 13th MEETING MINUTES

Vice President Joe Suta called the regular meeting to order at the home of Ron and Debbie Ries at 7:05 P.M. There were 8 members in attendance: Ron and Debbie Ries, Joe and Helen Suta, LeAnn Hermance, Lisa Schmidt, Dick Kinyon, Clete Gregory and Fred Fitzpatrick.

#### **Minutes**

Joe asked the members if there were any corrections or additions to the minute. There were none and the minutes were approved as published.

#### **Treasurer's Report**

LeAnn reported that she wrote one check to Bob for \$366.21 in payment for the bear spray. We are still missing one of the holsters for a regular can if anyone has it. This was probably used on an inert can. Ron and Debbie submitted bills for groceries for the poker ride and work projects for \$568.06 and \$550.00 for the purchase of the 45-70 rifle for the state raffle item. There were three deposits for the poker ride \$298.00 for meals and donations, \$530.00 from the auction and \$805.00 for poker hands. Also deposited was \$339.20 for sales of bear spray as we still have one can for sale. A report of the bank balances was passed around to the members. Clete made a motion to pay bills and accept the Treasurer's report, seconded by Lisa and was approved.

#### **Correspondence**

Fred said he had just received a letter from the IRS today. He had received notice before that our request for 501C3 status had been approved, but the new letter informed us that we would probably need to submit a 990-n income report for the club. We should have been filing in the past, but our EIN wasn't any good anymore and Fred had to get that taken care of first.

#### **Committee Reports**

Fred said he had received notice from the State BCH to inform our members of a couple of issues of concern. We are to contact Senator Daines and ask him to support the Land and Water Conservation Fund. The fund receives a portion of the royalty from offshore oil and gas leases, and it has been used to help with outdoor recreation and access. It is due to expire soon, so contact Sen. Daines. The best way to contact him is at his

local office.

The other issue is a meeting of the Coalition to Protect the Rocky Mountain Front to talk about the noxious weed strategy. Some meetings have already been held, but there are others that can be attended.

#### **Old Business**

LeAnn gave a report on the success of the Poker Ride this year. We sold more poker hands at \$10.00 each, sold more hamburgers and hot dogs, and cleared \$405.00 more than last year. She thanked everyone who helped in any way to make our fundraiser a success.

The Lange Creek work project was discussed. Very few will be able to participate in the work project, but Dick and Bob may try again to locate it. The Forest Service sent maps for the project which LeAnn gave to Dick.

The Beartooth Hitch Rail project was a success. Ron reported that they had a lot of help from Fish and Game, hunters, and horsemen who use the area. They were able to place all 17 hitch rails by 3:00 P.M. that day.

#### **New Business**

LeAnn said there were several raffle items that weren't claimed after the poker ride. She was wondering if the club would approve Bob and her purchasing a \$50.00 gift certificate that the Lighthouse in Valier had donated. Clete made a motion to approve, seconded by Lisa. Motion passed. She then asked the members how they wanted to handle the rest of the unclaimed items. It was decided to keep them for door prizes for the convention. Fred made a motion to keep them for the convention, seconded by Debbie. Motion passed.

Clete brought a defensive horse safety book that he received and gave it to the secretary to keep.

#### **Convention Progress Update**

Ron was able to purchase the Marlin 45-70 he was trying to get as a raffle item for \$550.00. He said Thales Mullenax is building a pack saddle for the raffle, which Ron is donating.

It was asked if anyone had come up with any more raffle items or ideas. LeAnn said she was still looking into checking with Minuteman Aviation about a helicopter ride over Glacier Park as a raffle item. She will also have Bob check with North 40 about a raffle item now that we have 501c3 status.

Ron will be working with Brad Brenteson to get the centerpieces going. He has booked entertainment for Saturday night of the convention. Now that we have the rifle, Ron and LeAnn will be checking to see who can do engraving of the BCH logo on the rifle. Fred said he

will get the letter to vendors completed, but needs the list of vendors.

Lisa asked what the budget was for the convention. Fred said he thought \$4000 would be enough to get us through until the registrations and money start to come in. Fred made a motion to cash some CD's when they come due, Debbie seconded and motion carried. Fred told Lisa we wouldn't need to pay the Hotel until after the convention is over.

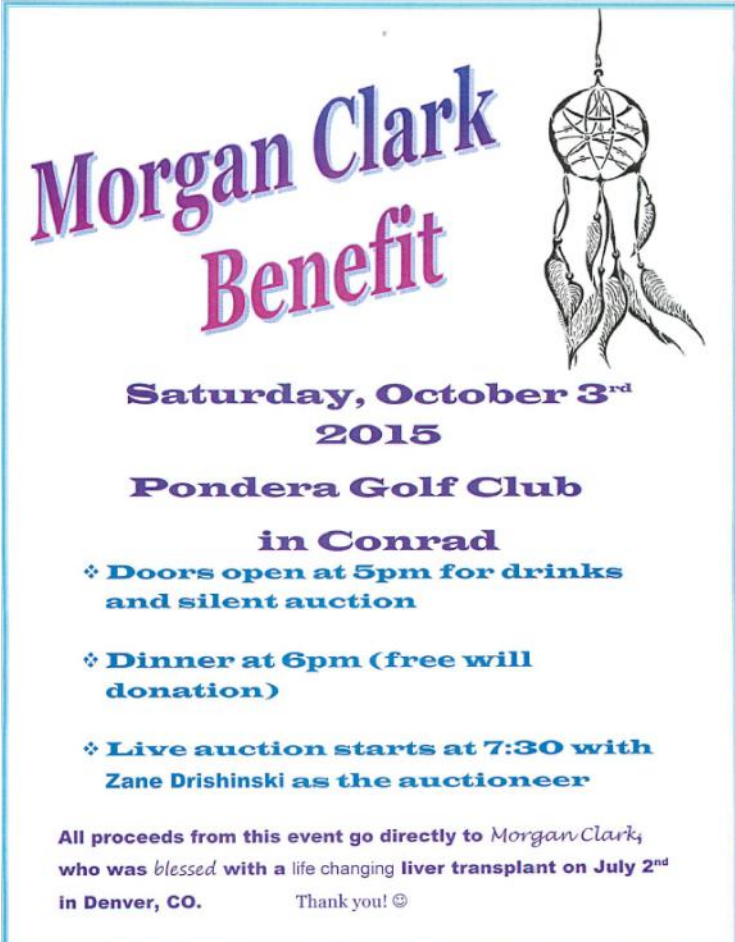
Since we don't plan on having break-out sessions during the convention, we will have presentations instead. Dick Kinyon said he would do a horse care presentation, but we will need at least another presenter. LeAnn said she is still working on getting Two Bears rescue to do a presentation. Clete commented that we need to be sure and tell the presenter they will need to do a knowledgeable presentation for at least 200 to 300 people.

Lisa then asked what the breakdown of costs far and what else would be anticipated for the convention. So far, with the centerpieces, entertainment and rifle amount is \$3,310.00.

There being no further business, Clete made a motion to adjourn, seconded by Joe. Motion passed. The next meeting will be at Bob and LeAnn Hermance's on September 10.

Respectfully Submitted,  
Helen Suta, Secretary

Morgan is the daughter of Steven Clark .



**Morgan Clark  
Benefit**

**Saturday, October 3<sup>rd</sup>  
2015**

**Pondera Golf Club**

**in Conrad**

- ❖ **Doors open at 5pm for drinks and silent auction**
- ❖ **Dinner at 6pm (free will donation)**
- ❖ **Live auction starts at 7:30 with Zane Drishinski as the auctioneer**

All proceeds from this event go directly to Morgan Clark, who was blessed with a life changing liver transplant on July 2<sup>nd</sup> in Denver, CO. Thank you! ©



Please thank the businesses and individuals who donated to the Poker Ride or were corralled into helping. Also thank you to the whole work crew who kept hopping all day. We had a very successful weekend and it just continues to get better.

**Choteau**  
Choteau Trading Post  
Front Range Supply  
Grizzly Sports  
Main Street Express  
Stage Stop Inn

**Conrad**

**A & W**  
Bullhead Sports  
Conrad Building Center

**Conrad Vet Clinic**  
Custom Crop Care  
Frontline Ag Solutions  
Gary & Leo's IGA  
K's Auto  
Main Drive Inn  
Mountain View Coop  
Pure Bliss Cycle  
Stockman Bank  
Town Pump  
Windrift Hills

**Shelby**

**1 St Bank**  
Ben Taylor, Inc  
Car Quest

**Hardware Hank**  
Simons Petroleum

**Valier**

**Cenex Harvest States**  
Lighthouse  
Ben Taylor, Inc

**Individuals**

**Al Winters**  
Jeri VandenBos  
Merlyn Huso  
Cliff Gustafson  
Zane Drishinski



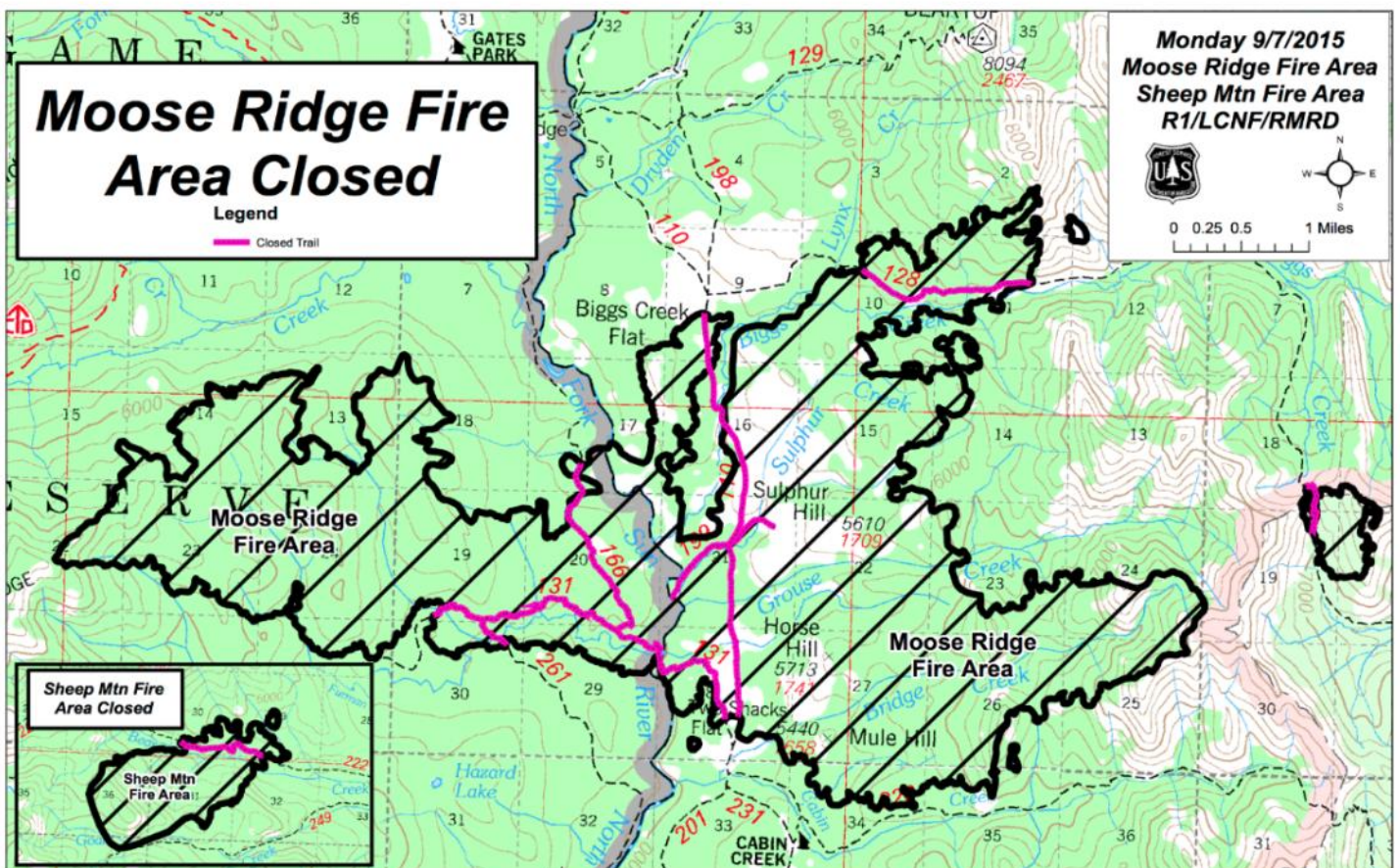
Sunday, September 6, 2015

## Area Closure Update

With the rain and snow over the last several days, the Rocky Mountain Ranger District of the Lewis & Clark National Forest has revised area closures associated with the wildland fires currently burning on the District.

As of midnight on September 7, 2015 the Rocky Mountain Ranger District will reduce the large area closures that have been in effect since August 28, 2015. The only areas that will remain closed are the areas within the existing fire perimeters. In the meantime, fire crews will be evaluating and mitigating hazards along key travel routes within the fire perimeters. When Fire Managers determine those routes are safe for public travel, the District will begin incrementally opening those travel routes.

The highest priority among the travel routes to open will be North Fork Birch Creek trail #121 from Swift Dam to Badger Pass. This trail provides public access to the Flathead National Forest.



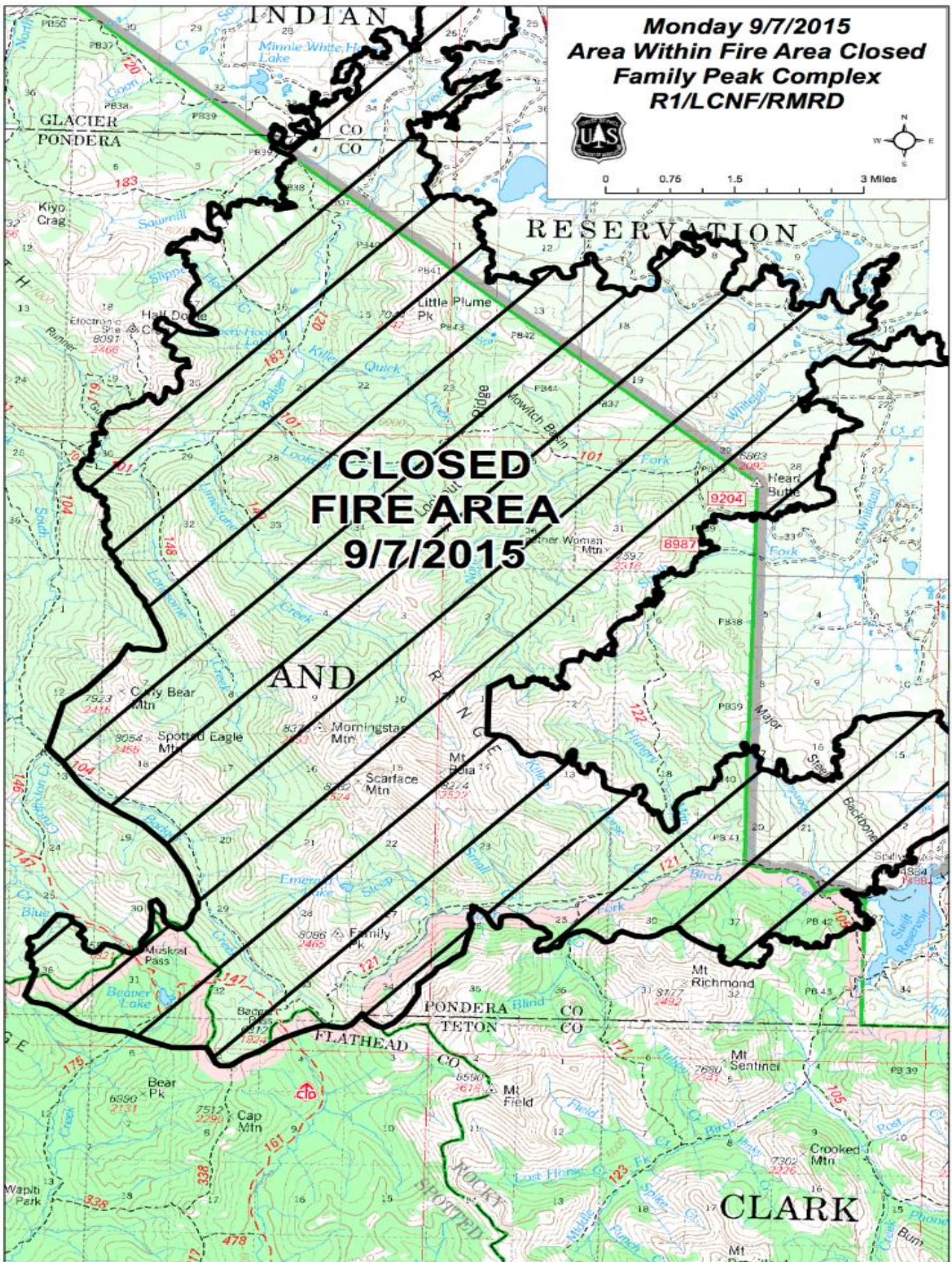


**Monday 9/7/2015  
Area Within Fire Area Closed  
Family Peak Complex  
R1/LCNF/RMRD**



0 0.75 1.5 3 Miles

**CLOSED  
FIRE AREA  
9/7/2015**





# Hayward Creek Fire Pictures



Hayward Creek trail out of station 2 campground.



Looking towards the west of Hayward Creek



West End of Swift Dam looking south from Hayward Creek.



Hayward Creek Campground, creek running black with soot



# Is Summer Grass Safe?

Keep Your Horse Healthy  
All Summer Long

by Dr. Joyce Harman, DVM

PHOTOS COURTESY OF HARMANY EQUINE

**S**UMMER HAS ARRIVED, bringing with it the changing responsibilities of a horse owner. This may include changing out troughs more often to keep your horse's water cool and fresh, or hosing him down on those brutal July afternoons to bring a bit of relief. What you might not do is think about the hidden dangers of summer grass.

Most horse owners believe their horses are only at risk for laminitis during the spring and early summer when grass growth is most intense. The truth, however, is that we need to remain vigilant throughout the summer as sugar content in the grass changes with the weather. All horses, but particularly those with metabolic issues, are susceptible to fructans, a type of sugar, in the grass. If these sugars pass into the hind gut before they're digested, they can kick off a process that will cause laminae to fail. This leads to a laminitic attack. Metabolic horses also have a difficult time using glucose, or sugar, as fuel and instead store excess sugar as fat. Horses with metabolic, laminitic or obesity issues will get progressively worse over the course of the summer. To keep your horse safe and healthy on summer grass, consider the following suggestions:

**Don't overgraze.** Most horse owners don't realize that the greatest concentration of sugar in grass lies in the three inches closest to the ground. If you allow your horse to overgraze, he's getting way more than his fair share of sugar. Tall, coarse grass is less rich, so your horse can safely eat much more (be mindful as he also gets more with each bite).



**Grab a muzzle.** Muzzles allow a horse to behave normally in the pasture in terms of exercise and socialization without running the risk of over-grazing. I recommend a state-of-the-art muzzle available from Harmany Equine that is totally customizable. It can be molded to a horse's head shape to determine how much, or how little, grass

is available to the horse. The muzzle is made of a medical grade plastic with Kevlar® fibers, making it much lighter than other available muzzles without sacrificing durability.

**Watch the weather.** Though most bouts of laminitis happen in spring and early summer when grass growth is intense, the weather plays a large role in the sugar content of the grass. Keep these things in mind:

- Typically, your horse is safest with the standard hot, dry weather that's common in the mid-late summer months.
- Grass that's stressed (either overgrazed or in a drought) will be high in sugar.
- Rain leads to rapid plant growth (and increased sugar content), particularly after a drought.
- Unseasonably cool temperatures (either a dip in the evening or several days of much below-average temperatures) will increase sugar content in grass plants.

**Strategize turnout.** On a typical summer day, fructan levels in the grass peak in the sunniest part of the day (usually around noon), slowly declining throughout the evening, and hitting the lowest point in the late evening/early morning hours. If you want to maximize your horse's healthy grazing, let him out to graze just before you head to bed then bring him back in early in the morning.

**Assess your horse.** If you see your horse multiple times daily, you're much less likely to notice unhealthy changes in his body until it's too late. Consider using a weight tape every 10 to 14 days to ensure he remains at a healthy weight. If he's gaining, adjust your grazing plan accordingly. It's also a good idea to feel his fat pads (neck crest, croup, ribs, etc.) weekly. If the texture of the fat changes from soft and pliable to hard and lumpy, he needs to lose weight.

By remaining aware of your horse's condition, watching the weather and developing a strategy, your horse can safely enjoy summer grazing.

NWH15

**DR. JOYCE HARMAN** opened Harmany Equine Clinic, Ltd in 1990, bringing holistic healing to horses from all walks of life. Over the years, Dr. Harman has observed and adapted to the changing needs in the industry. Twenty-plus years ago, no one had heard of Lyme disease or insulin resistance, yet today those issues make up a large part of her clinical practice. Learn more at [harmanyequine.com](http://harmanyequine.com).



