

The Picket Line

Post Office Box 3232, Bozeman, Montana 59772-3232



Officers

President:

Brown Parsons 586-9030

Vice President:

Margot Doohan 586-4262

Treasurer:

Sammylu Parsons
586-9030

Secretary:

Joan Holborn 586-3306

Directors

Dick Grover 586-0575
Bonnie Hammer 284-6822
Rich Inman 388-1564
Bettye White 586-2301
Jacki Conti 586-5047
Dan Porter 585-8879

State Board Members

Harry Boughton
Linda Roffe
alternate : Ron Rassley

Newsletter Editor

Sharon Lowry
587-4013
lowry@180com.net

On The Calendar This Month



Club Meetings in February

February 5th, 2002 Board meeting. .7:00
at Brown and Sammylu Parsons house.

February 21, General meeting - This will
be a potluck and knot tying by everyone in
the club. Alliance Church, Belgrade. 6:30 PM.

Special events in February

February 5-9th Winter Fair Jacki Conti will be hosting the Pack Contest on
the 7th. Please call her to offer help with this event. 586-5047

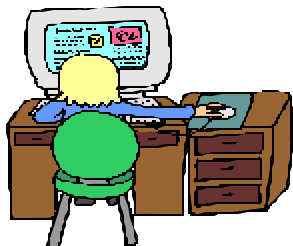
February 17th Ski Day with Chick Hale 763-4105. Call Chick for details.

Newsletter this Year!

This year we will be trying a whole different approach to the Newsletter. The Editor this year will truly be an editor. What fun! You as all the reporters will submit all your thoughts, ideas, ramblings, committee reports, articles, regular features, tall tales, subjects of interest, poems, questions, answers, and anything else that you would like to share with the club. I, as the editor will have all the fun of putting this together. I would appreciate the committee reports, trail ride reports, trail work reports, minutes, regular features and anything pertinent to the club for the coming month, to be in to me by the Thursday following the last general meeting. All other submissions can be sent to me at any time. If you have a lot of things, send them all at once if you like. I will hang on to them and use them as I have the space. I have had so much support and

help already that is makes me excited to do the Newsletter! Keep up the good work, I am counting on you!

Membership



This is a revival of a feature we used to have. I will be putting the new club members in this column so you can add them to your list of members.

Jan Elpel
8215 Fowler Lane
Bozeman, MT 59718
587-5844
jelpel@in-tch.com

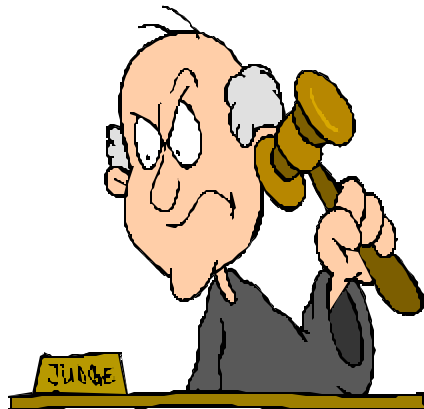
This is another gentle reminder that club dues are due by the 1st of March. I don't want you to miss getting the exciting new Newsletter.

Attention 'Knot' Heads!

This is your chance for revenge against naughty knots! Each one of you is asked to please share on or two or three or whatever of your 'nicest' or knotty-est' knots with club members at the Feb. 21st meeting. Each group of two will be given about

5 feet of rope to practice with. Please brush up on a favorite knot that you can share with fellow club members!

Message from the President



Traditionally, the program for the January general meeting was a time when we planned the calendar for the New Year, 2002. I would like to thank all those people who helped with this task. Bonnie offered to take the planning calendars from each group and put it together for the newsletter. It is not "set in stone" so if you would like to see something different let us know right away.

Sharon Lowry has also offered to put the newsletter together, PROVIDING She received material from members. If you have a joke, or see an article you think others would enjoy, send it to Sharon via email so she doesn't have to retype it. (Snail mail is okay too. *Editor insertion*) she may need it now or save it for a later newsletter - we will leave that up to Sharon - THANKS SHARON.

The club decided at the January meeting, at the recommendations of the Board of Directors, to select our slate of officers in October and vote on them in November with the use of absentee ballots and the gavel would be passed to the new officers at our Christmas party meeting. We will vote on this change in our constitution in the near future.

We are in need of two more members to be delegates to the State Conventions in Red Lodge in March 22,23 and 24th. If you are interested please let me know.

You know, horse people are really a special breed of people. We go out in the bitter cold and blowing weather to take care of our horses and I know they appreciate our efforts, just as we appreciate them when it comes time to get back to the trail head. So enjoy the time it takes to feed and water your horses because they work hard for you during the riding season and do not complain.

Winter is also a time to get your gear in order, clean it up, repair those saddle bags and throw away some of the stuff that's been in them for awhile. Go shopping and get some of the things you saw other riders use and you thought it would be good to have too.

See you at the next meeting and bring a friend. If you are looking for something to do, call Jacki Conti. She can use some help at the Winter Fair.

Brown

Land of Disaffected Dreams

Home of the 'free and the
brave,'

Starting with the fragrance
of sweet clover,

Blowing into the car, on the
road to White Sulfur.

The shed roof falling off the
barn on the way;

The barn sagging of the
weight of years;

Pickup, rusty and dark in
the field,

Driven 'into the ground' it
looked.

Then the empty white
clapboarded home,

Stuck out in the pasture,

Much smaller than the long
calving shed out back.

Nothing much changed,

Save the new wider gray
highway,

And nothing much changed
at the end of it,

Still the land of peoples'
former dreams.

--Anon.



Jenny's Corner

Winter Hoof Care

Now that winter is upon us, it is a good time to talk about the care of our horses' feet during the winter. Even though we may not be using them like we do during the rest of the year, it is not the time to grow lax in the hoof care

department .

The first thing that should be done is to have their shoes pulled in a timely fashion if you are not going to be using them over the winter. This is very important. First of all, letting the shoes cling on until your first spring shoeing is not healthy for the horse. While they have those shoes on over the winter, they will accumulate snow balls in their feet. This may not seem like such a big deal, but they can become quite hard, and if they stay in the foot long enough, they can cause enough pressure against the sole to cause the horse to become sore. Additionally, if the horse's feet get long and he/she loses a shoe, the foot can break off to the extent it will be too short to get a shoe back on in a safe manner until it has grown out somewhat. If the long foot does not break off, it can cause a hoof crack. The crack may become quite serious if it cracks into sensitive tissue. This will also most likely cause the horse to become lame. I think it is safe to say that the majority of hoof cracks that cause lameness are caused by neglect of hoof care. Hoof cracks to this extent can be very time consuming and costly to heal, in both veterinarian and farrier fees . Another hoof health problem caused by leaving the shoes on too long is corns. Corns are basically sores that develop in the heel region of the bottom of the foot (to put it in a general way). Corns are caused, in one way, when a shoe is left on too long and the hoof wall grows over the shoe. When this occurs in the heel region, pressure is placed on the sole by the shoe and causes corns. Finally when a shoe at last falls off, it usually leaves behind some nails or parts of nails in the foot. Having these nails in the foot itself is not a big deal until it comes time to shoe the horse again. If you've ever had to try and dig these out, you would know what I'm talking about! The danger comes when it's time to nail on a new shoe. If there is some part of the nail that a person cannot get out of the foot (and sometimes it is impossible to get them all) when you are driving a new one, it can glance off the part of the old nail in the foot and pierce sensitive tissue in the foot. We all know what can result when this happens. At the least, a little blood is drawn and it's not a big deal. However, an abscess can develop, which can really be difficult to get healed. So now that I've gone on about the importance of having your shoes pulled for the winter, we can talk about what goes on next.

Once you have had the shoes pulled and the feet trimmed at the beginning of winter, it may be a good idea to have the horse trimmed at least once over the course of the winter. In the winter, the feet grow slower than they do in the spring and summer, so you can probably look at a trimming interval of 8 to 10 weeks. If you are not going to have your horse shod for the first time until late spring, you may want to get him/her trimmed twice over the winter. Trimming in a timely fashion will keep the feet healthy and in good shape. If there is a problem that may develop, trimming regularly will help your farrier to pinpoint it at an earlier stage, or even to eliminate it entirely. Also, when it comes time to put on that first set of shoes for the year, feet that have been trimmed over the winter are much easier to shape up and are in better condition for the shoes than feet that have been allowed to get long and out of shape. Not to mention that your farrier will appreciate it!

That's really about all there is to looking after your horses' feet during the winter, unless you are going to keep them shod, which is another subject!

Jenny Kawasaki
American Farrier's
Association Certified
Farrier

Expo

For all those who have signed up to help out with this year's "Back Country Horsemen & Sportsmen Expo" in August, the committee meetings have set-up to meet prior to each general club meeting. We are meeting every third Thursday at 5:30 PM in Belgrade, at The Mint.

We already have commitment from Smoke Elser and other participants. The 4 Dot facility and professional advertising is already donated. Our club will receive lots of recognition and more new members will come from it. This will be a fun event to plan. You didn't have to sign up to come put in your ideas and time. Anyone is welcome!

See you there,
Linda Roffe
284-6546 WK
586-2142 HM



Bits



"Bits" is a new feature of The Picket Line that will have horse, trail and training tips each month. Please feel free to send us one of yours!

Should You Get a 'Horse Divorce'?

Not to start off this column on the negative side but...You and your horse's personalities ought to be at least workably compatible, which is to say that you don't want to go on fighting with a horse you don't like or can't handle. How do you know when to call it quits and sell or trade? Well, you first have to admit to yourself that you don't understand your horse's behavior. On the horse's side, it may have some basic faults in attitude, behavior or way of going. The first basic requirement in a human-horse relationship is, however, that you like and respect the animal. Without that, there's a lot less hope for developing a good relationship. Going to a clinic—several clinics maybe—can help you get a more objective insight into your horse's behavior, your messages to your horse, and your interactions. Then may come the hard part: if it's the horse, you may need to sell; if it's you, you may need to upgrade your education and technique. Actually, if it's you, and you don't need to go through the pains of selling, you're far better off, and so is your horse! It's always worth getting an expert appraisal and advice before you conclude that it's all the horse's fault and jump into the sale ring. Either way, when you're not getting along, you're obviously the one who has to take the initiative. But it always pays to give the horse the benefit of the doubt, *first*.

Article and inspiration for column submitted by Jim Gould

Trail Etiquette

Sometimes, we have on our rides, young/green horses, young/green riders, or both. So, we, who are more experienced, want to help them along by being as considerate as possible to avoid any bad experiences that could happen. One of the helpful ways would be...to keep your horse from getting too close to the horse in front of you. By letting your horse stick his nose up the "you know what" of the horse in front, you give that horse a chance to kick you. They say that a horse's length between horses is a safe distance. Try it. The rider in front will appreciate it. If you watch horses that keep turning their heads back or pinning their ears, then that horse is annoyed. If your horse is a known kicker, place a red ribbon on his tail to let other riders know his reputation. If he does

kick, be sure to punish A.S.A.P., otherwise it does no good. Happy trails to you.

Article and inspiration by Jiffie Hale. This also is a column we would like club response on. Please submit your ideas.

Speaking of Jiffie! She reports that even after 52 years of being married, Chick still whispers in her ear, "I love being married. It's so great to find that one special person you want to annoy for the rest of your life."

GVBCH Board 12/4/01 Minutes

Attendance: Brown and Sammylu Parson, Margo Doohan, Beth Merrick, Chick and Jiffy Hale, Linda Rolfe, Jacki Conti, Dan Marsh, Dan Porter, Richard Ramono, Dick Grover, Sonja Berg, and Joan Holborn.

Treasurer report from Sammylu reported and approved. New Member: Jan Elpel Dues of \$22.00 pd.

Issues: Director Chick- GVBCB was mentioned for trail work in recent Wildland Times Newsletter.

Chick spoke with field manager and learned they are choosing trail work in the Paradise Valley which he feels is more politically motivated.

Chick presented record of trail work since 1995 that he has kept. In 1995, 398 hrs were put into trails, this year- 1773 hours.

An E-mail was rec'd from Dick Haynes offering trail help.

Xmas dinner and general election will be on 12/15/01 at Kountry Korner.

Discussion about absentee and E-mail voting brought to a vote to keep voting to those in attendance at election Dec. 15, passed by 9-3. Brown will look into bylaws to about possible voting alternatives.

The term of State Alternate is 2 yrs.

Expo is set for 8/24/02 Smoke Elser volunteered to do demo. It was agreed to drop horse/mule sale for lack of previous sales. Can we sell beer?

Winter Fair : February 6 Jacki met with Heide Hart, Beth, Tom and Jean Griffith to discuss BCH running the mule/horse pack competition. Announcer will be Jim Yoakum. Need volunteers for fun event: Two judges and five helpers. Need 4 prizes of similar value, sponsors? Need items of equal volume to be packed for competitors, ideas? Sand bags, bowling balls, feed?

State Board meeting attended by Linda in Missoula.

She reports the Helena rendezvous is in March and they would like GVBCB to do GPS demo. Discussion of finding wholesaler to present demo made with Dan Marsh volunteering to research possibilities. Also Linda reports it was decided that each club donate 1 item for auction at the State Convention beginning in 2003 since it is too late to request this year.

State Convention is March 22-24 in Red Lodge. The club will take 2 directors and 6 delegates.

Jr. BCH. Discussion made about how and whether to support Linda is on this committee and suggested giving clinics to existing youth organizations such as 4-H and girl scouts.

Web site recognition: The state has given the club \$140.00 for the web site Dan Marsh set up.

Committee was formed of which Linda has volunteered to do graphics and format for other BCH clubs in the state.

State Newsletter: Linda reports we can get money for selling ads.

Grants: Subject discussed, are we missing a piece of the pie to other recreational groups?

the pros and cons of applying for grants was discussed. Suggested uses of money were for education, clinics, Expo, expenses for lated trail work. Beth stated we need Forest Service support to get grant approval. Chick relayed that the MCC(?) is applying for grant money involving trail work and possibly hiring BCH for assistance with possible \$200+ payment.

Program ideas for 2002: Schedule to be out in January

Suggestions made from: Linda- Pack in and out toilets; Jiffy- Chick to give clinic about what is required for trail clearing; Beth- Teach about weeds and light on the land; Beth- GPS, how and why; Linda-Slide show on southern Utah Canyons, she needs a projector and lap-top.

Dues: Beth opened floor to discussion if there is a need to raise fees. Motion by Jiffy to keep dues the same, 2nd by Beth, passed unanimously, Chick noted seniors are free, Dan Marsh noted cranky ones pay double. Dues to be paid March 1st.

Lewis and Clark Trail: Beth asks if anyone is interested in riding the L&C trail when the marker comes thru the valley? Brown asked to get state input.

Headwaters State Park: discussion about trail building ended in a vote of yes, if it is a horse trail, No, if it is a walking trail.

Misc: Does anyone know who at the MSU extension service is a writer on packing?

Our CPR training has expired, Richard R. has volunteered as certifiable.

Kudus from the President to Beth Merrick for doing a wonderful job on surveys.

Board of Directors

GVBCH 1/08/02 Minutes

Attendance: Brown & Sammylou Parsons, Margo Doohan, Beth Merrick, Chick Hale, Bonnie Hammer, Bettye White, Linda Roffe, Rich Inman, & Joan Holborn.

Treasurer report from Sammylou reports: Checking Acct. has \$1061.93

Money Market has \$2886.32

Total Acct= \$3948.25

Becker/ Hale Award cost approved

Issues: Chick will pursue a collaboration with MCC (Montana conservation corp.) who are applying for grant money for trail work and want the Club assistance to pack tools and camp to the work area to which the club would be paid approx. \$200+.

Noxious weed money still not rec'd, Brown concerned why.

Outdoor Expo featuring hunting and fishing at MSU in Feb is too expensive for the club to participate in. Linda will help the club to get exposure by distributing club flyers to attending vendors.

Absentee voting was again discussed with everyone agreeing it is a necessary option. Brown reports after reading bylaws that nothing is written to address issue. Agreed that the issue will be brought to the members at the general mtg. to seek approval for a change to the bylaws for future elections only.

Newsletter Editor is needed.

State Convention is on March 22-24 in Red Lodge. Brown and Sammylu plan to attend, as does Rich Inman. Linda may not be able to attend due to conflict and will find an alternate if necessary.

Club Membership dues are unchanged from last year and are: Family Membership \$32.00 = 2 votes, Single membership \$ 27.00= 1 vote. Payments due by March 1st.

Board meetings will continue to be at Brown & Sammylu's home on the 1st Tuesday of the month, except when conflict with major holidays, as in July meeting moved to the 9th, and in Sept., meeting moved to the 9th. General Meetings will be on the 3rd Thursday of each month.

Bonnie will bring calendars to the general meeting this month for groups to plan the club's

agenda for the following year. Leaders of the groups will be Rich Inman for Trail rides and Parades; Linda Roffe for Special events; Margo for Programs; and Dick Grover was volunteered for the Trail clearing group.

GVBCB 1/17/02 Minutes from general meeting.

Attendance: Brown & Sammylu Parsons, Margo Doohan, Chick & Jiffy Hale, Bonnie Hammer, Rich Inman, Linda Roffe, Tom & Jean Griffith, Jacki & RJ Conti, Dan Marsh, Sharon Lowry, Ron Rassley, Kay Tate, Joan Holborn, and 8 other club members.

Treasurers report submitted by Sammylu and accepted.

Noxious weed report by Tom Griffith. He is meeting with the weed board on Jan.22 at noon to discuss getting funds released to the club. Brown showed interest in also attending.

Winter Fair Update- Jacki reports the fair committee is meeting at 6PM on Jan. 22nd at Perkins Restaurant. Montana Tack of Livingston has offered \$30.00 sponsorship for prize for Pack scramble. Deadline for registering to compete is Feb. 1st.

Margo reports that she and Jean will be doing Dutch oven cooking at the fair on Sat. & Sun. Members approved the promotion of the club thru this activity.

CPR & 1st Aid- Our CPR certification is valid for 1 year and needs to be re-certified. The club will plan a day to offer CPR certification by club member Rich Romano. The Forest Service requires a minimum of 1 person per clearing crew to be certified.

Newsletter Editor- Sharon has offered to continue this vital link of communication and she requests we submit any issues we bring to meetings in a written format within a week for her to arrange into the newsletter, she welcomes any articles of interest, education, experience, or wit.

Absentee Voting- Brown brought a recommendation from the board to change the election format as to allow absentee voting. Nomination would begin in Oct. Elections in November via newsletter and the gavel passed at the December meeting. to confirm all voting. RJ made a motion to change voting as proposed, Margo 2nd & measure passed by a unanimous voice of members in attendance.

State Convention in March 22-24-. The following members have come forward to attend as delegates, Dan Marsh, Ron Rassley, Kay Tate, Brown & Sammylu, Rich Inman, Linda Roffe and Harry Boughton

Audit- Sharon Lowry & Joyce Haner have volunteered to audit the club's books.

Chick reports to the general members the request from MCC to pack their tools for their work crew to a trail site. They have applied for grant money for this work to which the club could see a payment of \$225.00. Also, Chick has a video on trail work for anyone to watch and learn.

A delightful chocolate cake was enjoyed by all from Sammylu. Members broke into 4 groups to work on scheduling events, program, trail work, etc. for 2002. Bonnie Hammer collected the planning calendars and will forward information to Sharon for the newsletter.

Next General meeting will be Hands on - tying knots, Kay volunteered to bring refreshment.

Respectfully submitted,

Joan Holborn, Secretary

A reminder!! All trailer licenses are due as of January 1

Traveling with your horses? 1) To travel out of your county but stay in-state you must have either an annual brand inspection for \$3 or a lifetime brand inspection for \$10 carried with you at all times, obtained from a state brand inspector. Remember, when we go to Red Bluff for a club ride we are in Madison County.

2) To travel out of state you must have: A) A state brand inspection as mentioned above. B) An annual equine import permit (no charge) obtained from the MT Dept of Livestock P.O.Box 202001, Helena Mt, 59620-2001 C) A veterinarian inspection certificate (health certificate) done within 10 days of travel and good for 30 days. D) a Coggins test (equine infectious anemia) of negative within 10 days of your planned trip. The Coggins test is good for 1 year in Montana but some states require a test every 6 months so check with the states you will be traveling to or through. Happy trails/traveling on horseback.

3) You also need: a State Recreation Lands Use Permit to ride at Red Bluff. It is available where hunting and fishing licenses are sold.

Submitted by Kay Tate